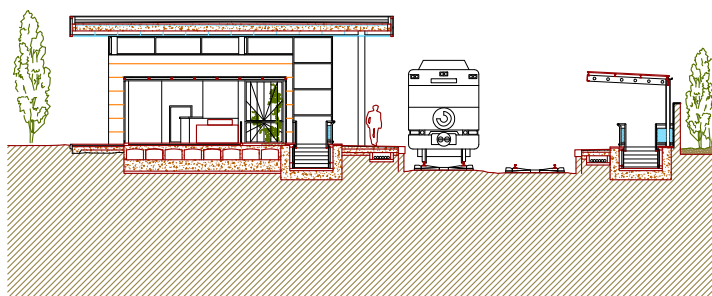
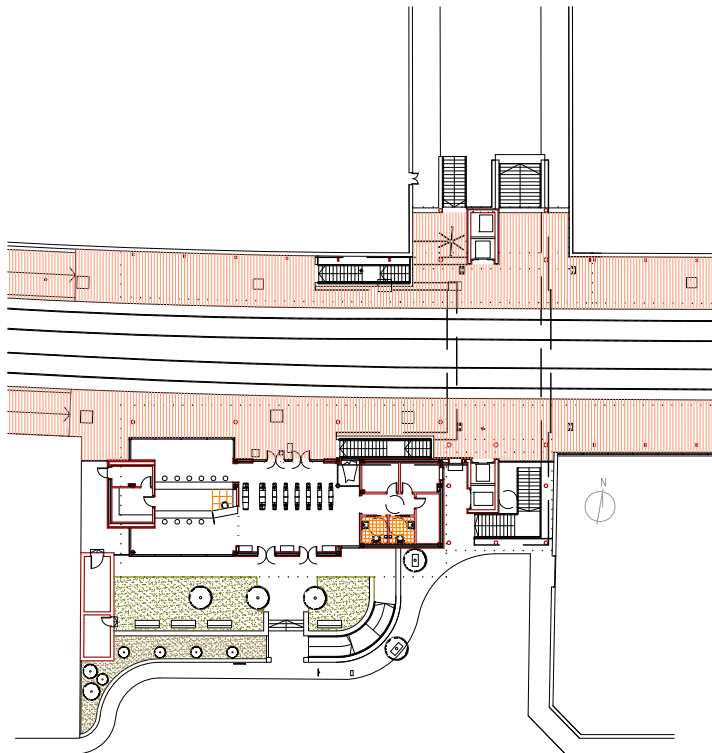
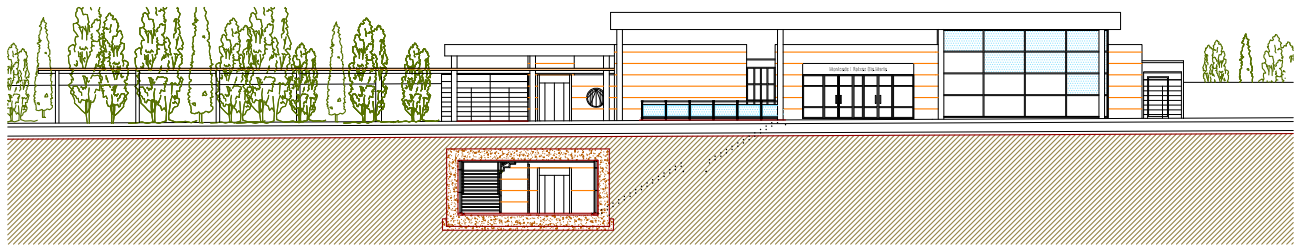


RAILWAY ARCHITECTURE



WORKS

Adaptation for people with reduced mobility – Installation of lifts

ADAPTATION OF MONTCADA I REIXAC SANTA MARÍA STATION, BARCELONA

CATALONIA

OWNERSHIP: ADIF
BUDGET: 2,183,629.53 € / YEAR: 2005

ARCHITECTS: Serdel S.A.P., Gonzalo Velasco and Wenceslao García