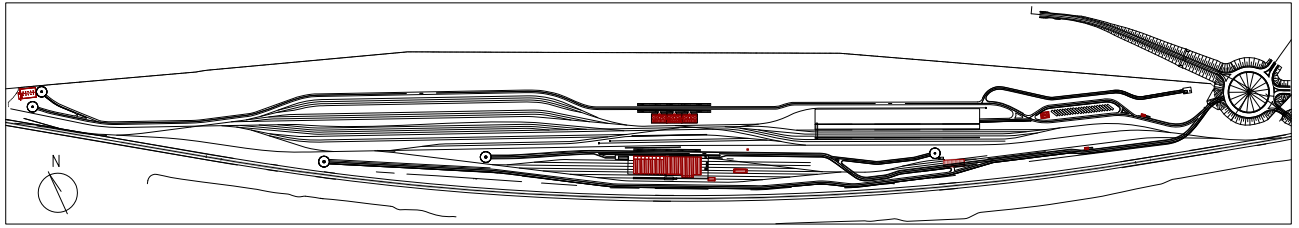
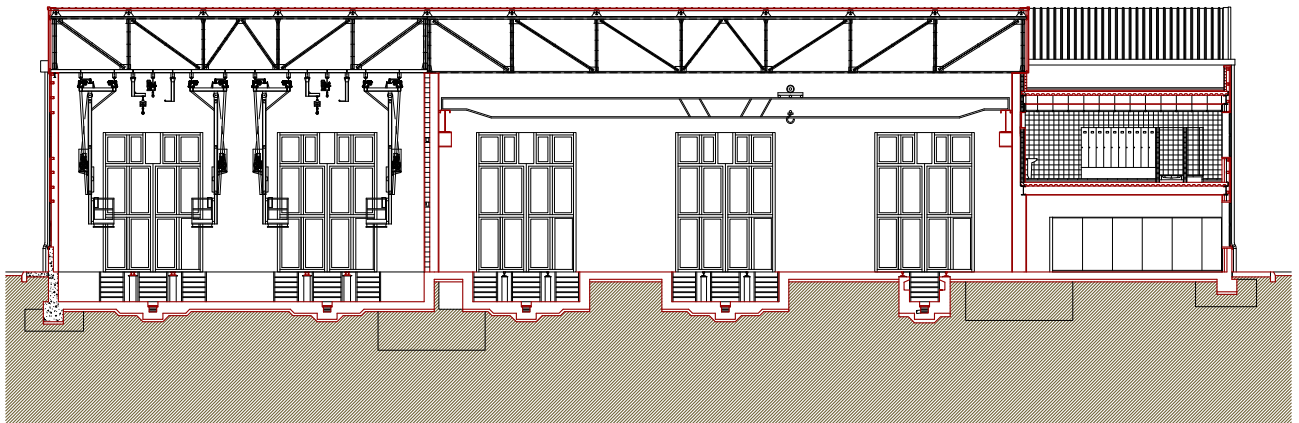


# INDUSTRIAL RAILWAY ARCHITECTURE



## WORKS

Freight Terminal. Freight and Engine Drivers Building – Container terminal building – Sanding – Relay platform – Loading and unloading bay



NEW RAILWAY COMPLEX IN ZARAGOZA'S LOGISTICAL PLATFORM (PLAZA)

ARAGON

OWNERSHIP: ADIF  
BUDGET: 22.780.576,89 € / YEAR: 2006

WRITING OF THE PROYECT:  
Serdel S.A.P., Gonzalo Velasco and Wenceslao García and INECO- TIFSA