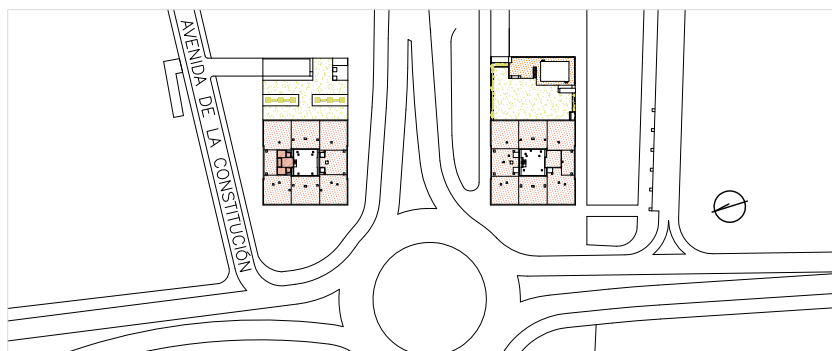
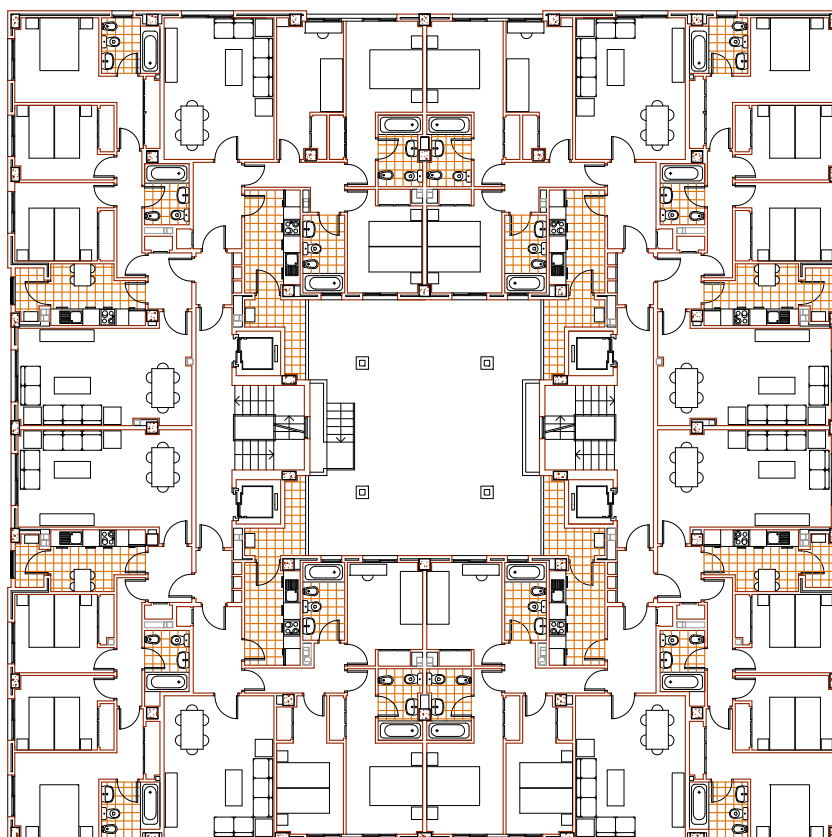


RESIDENTIAL ARCHITECTURE



WORKS

- Adapted accesses and homes for people with reduced mobility
- Gardens and urbanism
- Basement with garage and lumber rooms



70 AND 68 HOMES BUILDINGS WITH LUMBER ROOMS, GARAGES AND RESIDENTIAL AREA IN COSLADA, MADRID

COMMUNITY OF MADRID

OWNERSHIP: PROVENE S.A.
BUDGET: 6.319.230,39 € / YEAR: 2001-2002

ARQUITECTOS: Wenceslao García, Gonzalo Velasco