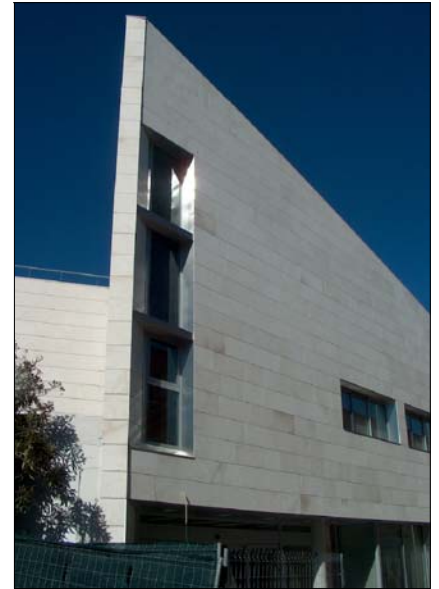
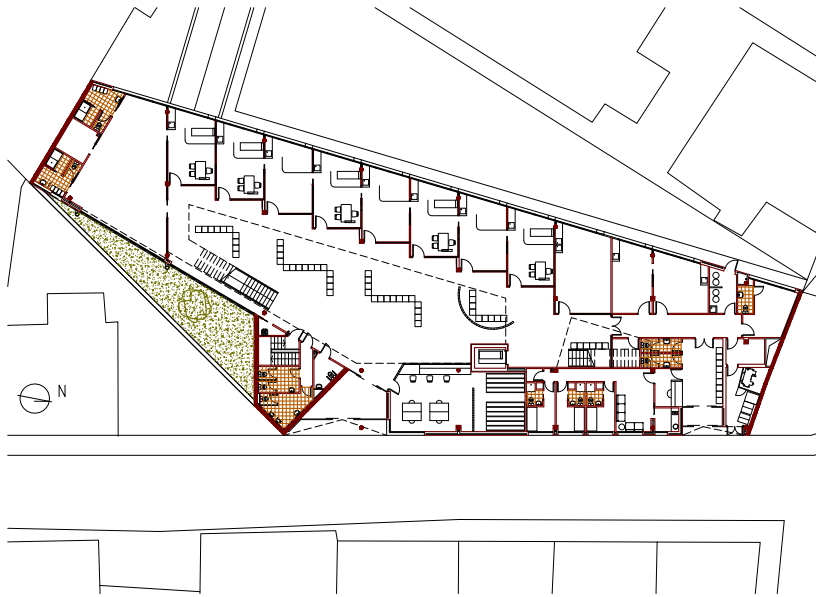


SANITARY ARCHITECTURE



WORKS

Primary care office – Paediatrics – Women health service office – Emergency – Gardens



HEALTH CENTRE IN FUENTE EL SAZ DE JARAMA

COMUNIDAD DE MADRID

OWNERSHIP: Servicio Madrileño de Salud. Comunidad de Madrid
BUDGET: 2.207.550,60 € / YEAR: 2004

ARCHITECTS: Serdel S.A.P. Gonzalo Velasco and Wenceslao García
BUILDING COMPANY: VÍAS Y CONSTRUCCIONES, S.A.