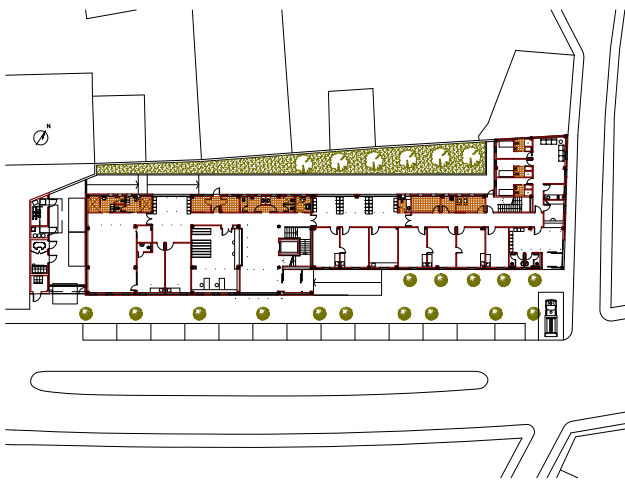
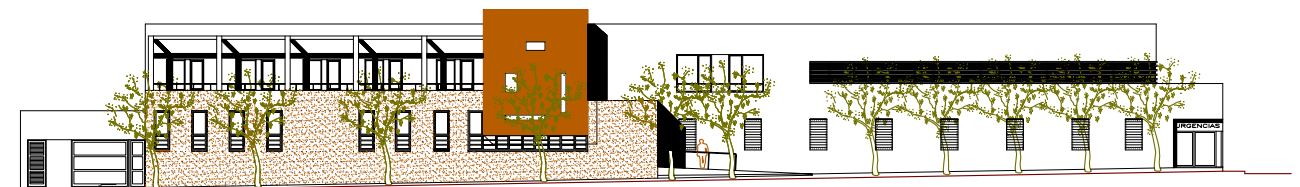


SANITARY ARCHITECTURE



WORKS

Primary care office – On-call section – Obstetric prophylaxis unit – Ambulance parking bay – Gardens



'NAVAS DEL REY' HEALTH CENTRE IN NAVAS DEL REY, MADRID

COMMUNITY OF MADRID

OWNERSHIP: Servicio Madrileño de Salud. Comunidad de Madrid
BUDGET: 1.425.422,28 € / YEAR: 2004

ARCHITECTS: Serdel S.A.P. Gonzalo Velasco and Wenceslao García
BUILDING COMPANY: Vías y Construcciones, S.A.