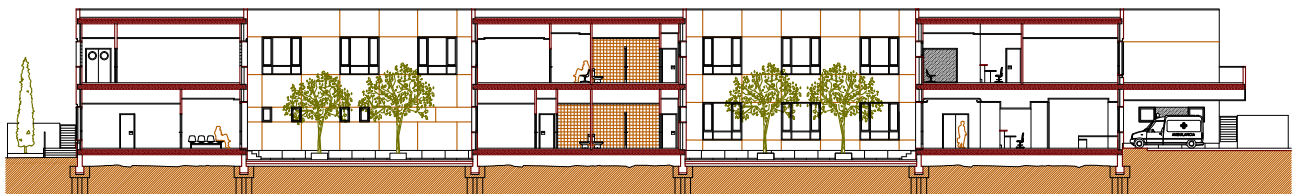
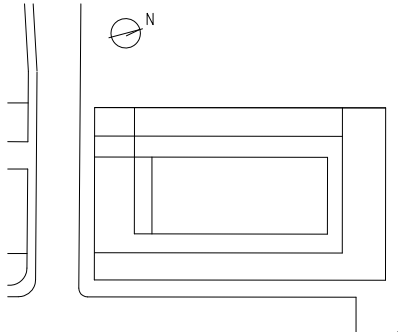


# SANITARY ARCHITECTURE

## WORKS

Primary care office – Paediatrics  
Women health care office – Physiotherapy  
Mental Health office – Seasonal unit  
Staff and patients car park – Ambulance parking bay – Gardens



PUERTO MAZARRÓN HEALTH CENTRE IN MAZARRÓN, MURCIA

REGION OF MURCIA

OWNERSHIP: Servicio Murciano de Salud. Región de Murcia  
BUDGET: 3.136.244,87 € / YEAR: 2006

ARCHITECTS: Serdel S.A.P. Gonzalo Velasco and Wenceslao García  
BUILDING COMPANY: Grupo Generala